

Phenylmethanesulfonyl chloride

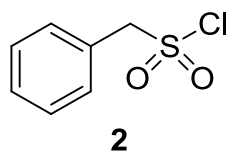
7.488
7.482
7.475
7.462
7.452
7.439
7.252

4.862

2.892
2.754

1.986

1.555



Current Data Parameters
NAME MK-2
EXPNO 10
PROCNO 1

F2 - Acquisition Parameters
Date_ 20131003
Time 19.18
INSTRUM spect
PROBHD 5 mm CPPBBO BB
PULPROG zg30
TD 65536
SOLVENT CDC13
NS 16
DS 2
SWH 12019.230 Hz
FIDRES 0.183399 Hz
AQ 2.7263477 sec
RG 31.94
DW 41.600 use
DE 10.00 use
TE 300.0 K
D1 1.00000000 sec
TD0 1

==== CHANNEL f1 =====
SFO1 600.1337060 MHz
NUC1 1H
P1 12.00 use
PLW1 23.00000000 W

F2 - Processing parameters
SI 65536
SF 600.1300234 MHz
WDW EM
SSB 0
LB 0.30 Hz
GB 0
PC 1.00

